

WSD MSP/WASL/HSPE TESTING OVER TIME

CURRENT GRADE 3-10TH CLASSES

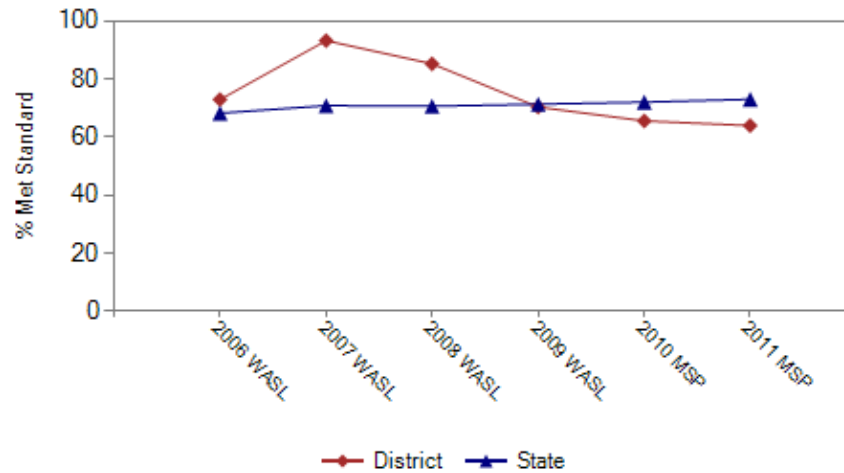
Spring 2011 Results

Get all that??

- **MSP** Measure of Student Progress (3-8)
- **WASL** Washington Assessment of Student Learning (3-12, no longer used)
- **HSPE** High School Proficiency Exam (9-12)
- **EOC** End of Course Assessment (9-12)

Year	District	State
2005-06 WASL	73.0%	68.3%
2006-07 WASL	93.3%	70.9%
2007-08 WASL	85.3%	70.7%
2008-09 WASL	70.4%	71.4%
2009-10 MSP	65.6%	72.1%
2010-11 MSP	64.0%	73.1%

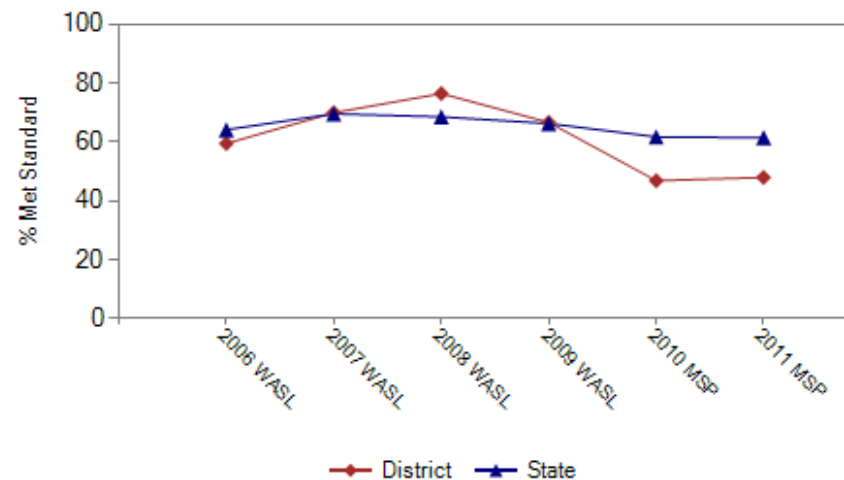
3rd Grade Reading Trend



3rd Grade Math

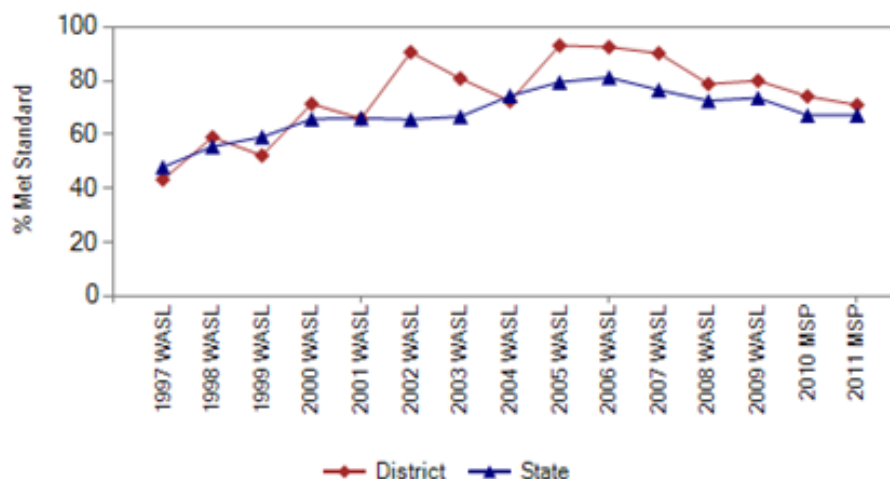
Year	District	State
2005-06 WASL	59.5%	64.2%
2006-07 WASL	70.0%	69.6%
2007-08 WASL	76.5%	68.6%
2008-09 WASL	66.7%	66.3%
2009-10 MSP	46.9%	61.8%
2010-11 MSP	48.0%	61.5%

3rd Grade Math Trend



Year	District	State
1996-97 WASL	43.3%	47.9%
1997-98 WASL	59.0%	55.6%
1998-99 WASL	52.2%	59.1%
1999-00 WASL	71.4%	65.8%
2000-01 WASL	65.9%	66.1%
2001-02 WASL	90.6%	65.6%
2002-03 WASL	80.8%	66.7%
2003-04 WASL	72.4%	74.4%
2004-05 WASL	93.1%	79.5%
2005-06 WASL	92.5%	81.2%
2006-07 WASL	90.2%	76.6%
2007-08 WASL	78.8%	72.6%
2008-09 WASL	80.0%	73.6%
2009-10 MSP	74.2%	67.2%
2010-11 MSP	71.0%	67.3%

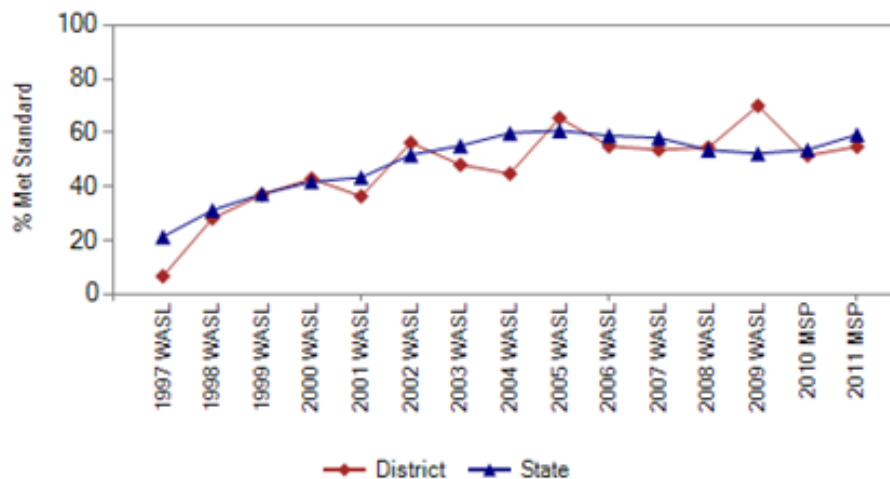
4th Grade Reading Trend



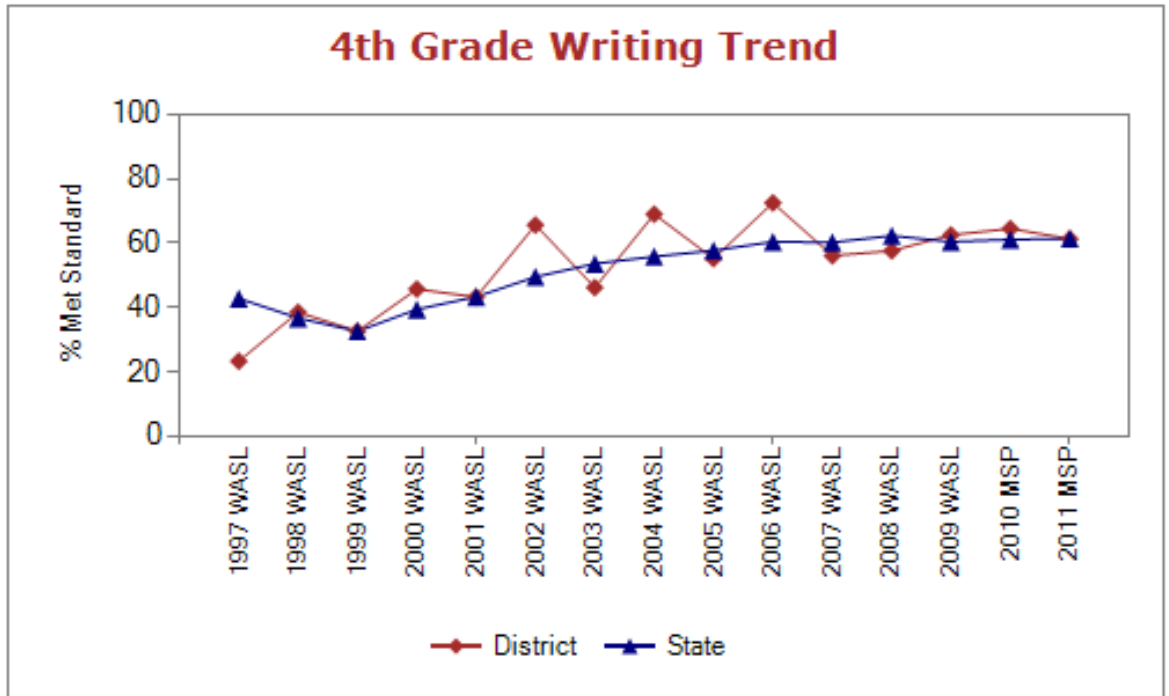
4th Grade Math

Year	District	State
1996-97 WASL	6.7%	21.4%
1997-98 WASL	28.2%	31.2%
1998-99 WASL	37.0%	37.3%
1999-00 WASL	42.9%	41.8%
2000-01 WASL	36.4%	43.4%
2001-02 WASL	56.3%	51.8%
2002-03 WASL	48.1%	55.2%
2003-04 WASL	44.8%	59.9%
2004-05 WASL	65.5%	60.8%
2005-06 WASL	55.0%	58.9%
2006-07 WASL	53.7%	58.1%
2007-08 WASL	54.5%	53.6%
2008-09 WASL	70.0%	52.3%
2009-10 MSP	51.6%	53.7%
2010-11 MSP	54.8%	59.3%

4th Grade Math Trend

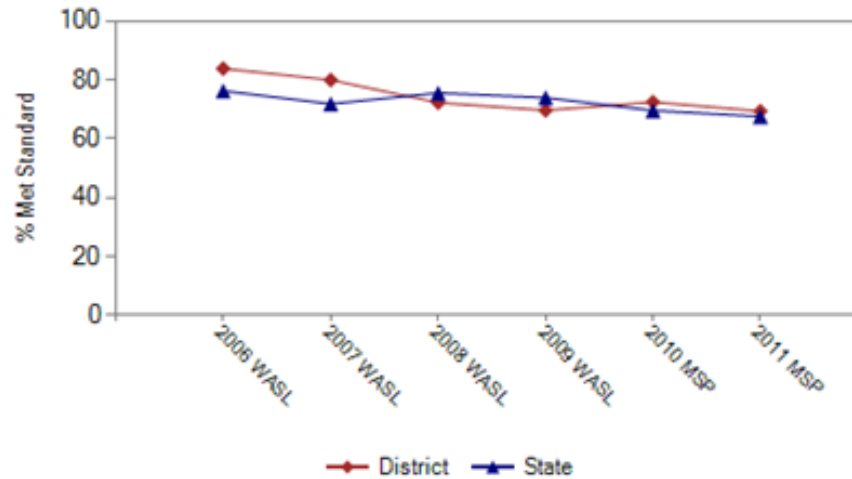


Year	District	State
<u>1996-97 WASL</u>	23.3%	42.8%
<u>1997-98 WASL</u>	38.5%	36.7%
<u>1998-99 WASL</u>	32.6%	32.6%
<u>1999-00 WASL</u>	45.7%	39.4%
<u>2000-01 WASL</u>	43.2%	43.3%
<u>2001-02 WASL</u>	65.6%	49.5%
<u>2002-03 WASL</u>	46.2%	53.6%
<u>2003-04 WASL</u>	69.0%	55.8%
<u>2004-05 WASL</u>	55.2%	57.7%
<u>2005-06 WASL</u>	72.5%	60.4%
<u>2006-07 WASL</u>	56.1%	60.2%
<u>2007-08 WASL</u>	57.6%	62.3%
<u>2008-09 WASL</u>	62.5%	60.4%
<u>2009-10 MSP</u>	64.5%	61.1%
<u>2010-11 MSP</u>	61.3%	61.4%



Year	District	State
2005-06 WASL	83.9%	76.3%
2006-07 WASL	80.0%	71.9%
2007-08 WASL	72.3%	75.6%
2008-09 WASL	69.7%	74.0%
2009-10 MSP	72.5%	69.6%
2010-11 MSP	69.4%	67.6%

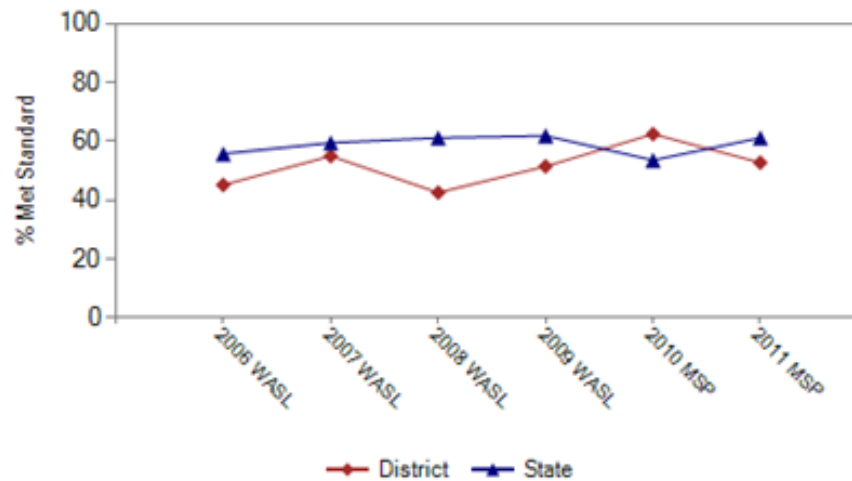
5th Grade Reading Trend



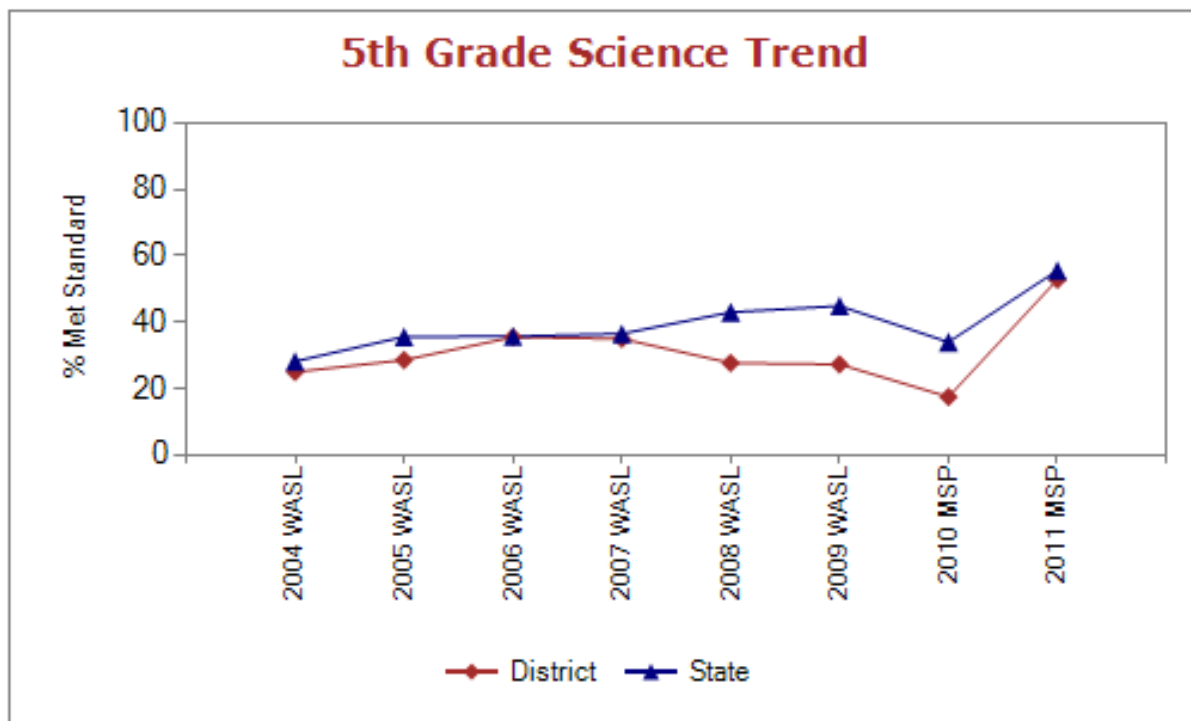
5th Grade Math

Year	District	State
2005-06 WASL	45.2%	55.8%
2006-07 WASL	55.0%	59.5%
2007-08 WASL	42.6%	61.2%
2008-09 WASL	51.5%	61.9%
2009-10 MSP	62.5%	53.6%
2010-11 MSP	52.8%	61.2%

5th Grade Math Trend

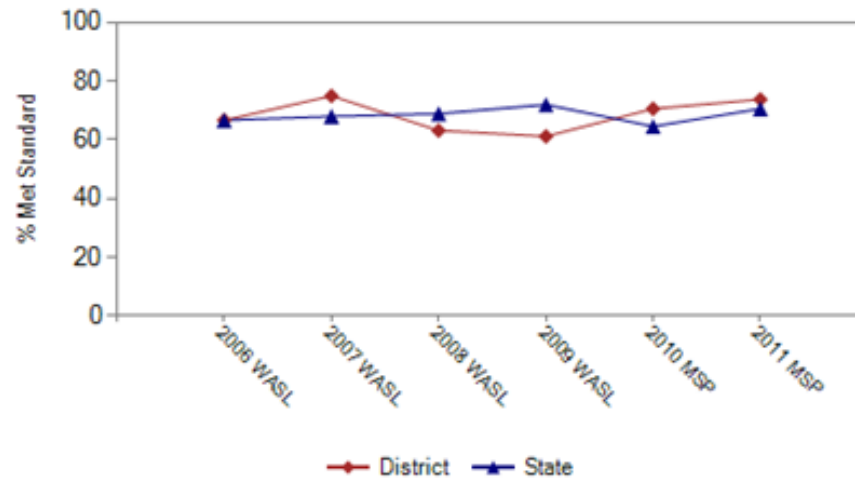


Year	District	State
<u>2003-04 WASL</u>	25.0%	28.2%
<u>2004-05 WASL</u>	28.6%	35.6%
<u>2005-06 WASL</u>	35.5%	35.7%
<u>2006-07 WASL</u>	35.0%	36.5%
<u>2007-08 WASL</u>	27.7%	43.0%
<u>2008-09 WASL</u>	27.3%	44.9%
<u>2009-10 MSP</u>	17.5%	34.0%
<u>2010-11 MSP</u>	52.8%	55.6%



Year	District	State
2005-06 WASL	66.7%	66.7%
2006-07 WASL	75.0%	68.0%
2007-08 WASL	63.2%	68.9%
2008-09 WASL	61.2%	72.0%
2009-10 MSP	70.6%	64.6%
2010-11 MSP	73.8%	70.6%

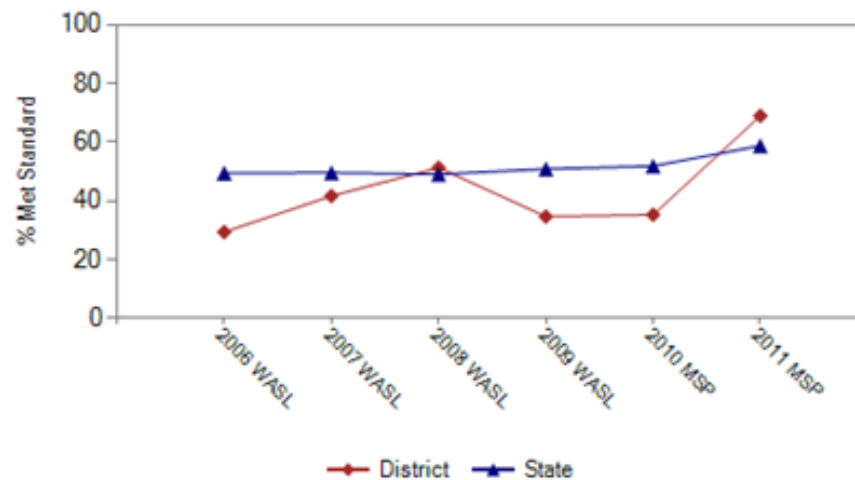
6th Grade Reading Trend



6th Grade Math

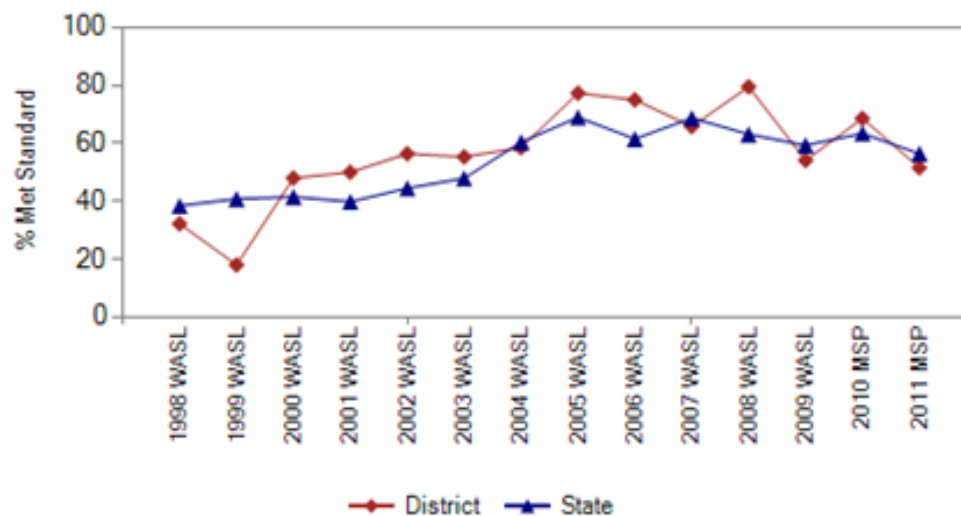
Year	District	State
2005-06 WASL	29.4%	49.5%
2006-07 WASL	41.7%	49.6%
2007-08 WASL	51.3%	49.1%
2008-09 WASL	34.7%	50.9%
2009-10 MSP	35.3%	51.9%
2010-11 MSP	69.0%	58.8%

6th Grade Math Trend



Year	District	State
1997-98 WASL	32.2%	38.4%
1998-99 WASL	18.0%	40.8%
1999-00 WASL	48.0%	41.5%
2000-01 WASL	50.0%	39.8%
2001-02 WASL	56.4%	44.5%
2002-03 WASL	55.3%	47.9%
2003-04 WASL	58.5%	60.4%
2004-05 WASL	77.3%	69.0%
2005-06 WASL	75.0%	61.5%
2006-07 WASL	65.8%	68.7%
2007-08 WASL	79.5%	63.1%
2008-09 WASL	54.1%	59.3%
2009-10 MSP	68.6%	63.4%
2010-11 MSP	51.6%	56.4%

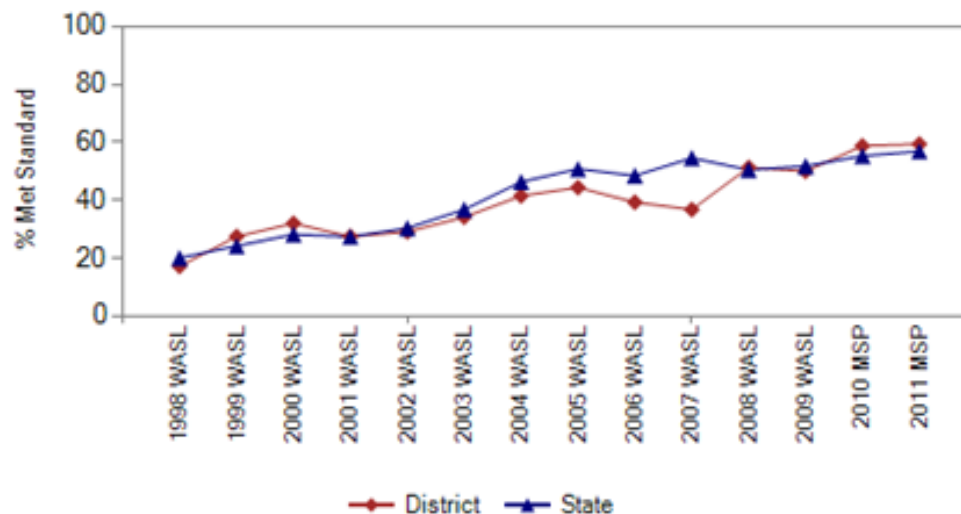
7th Grade Reading Trend



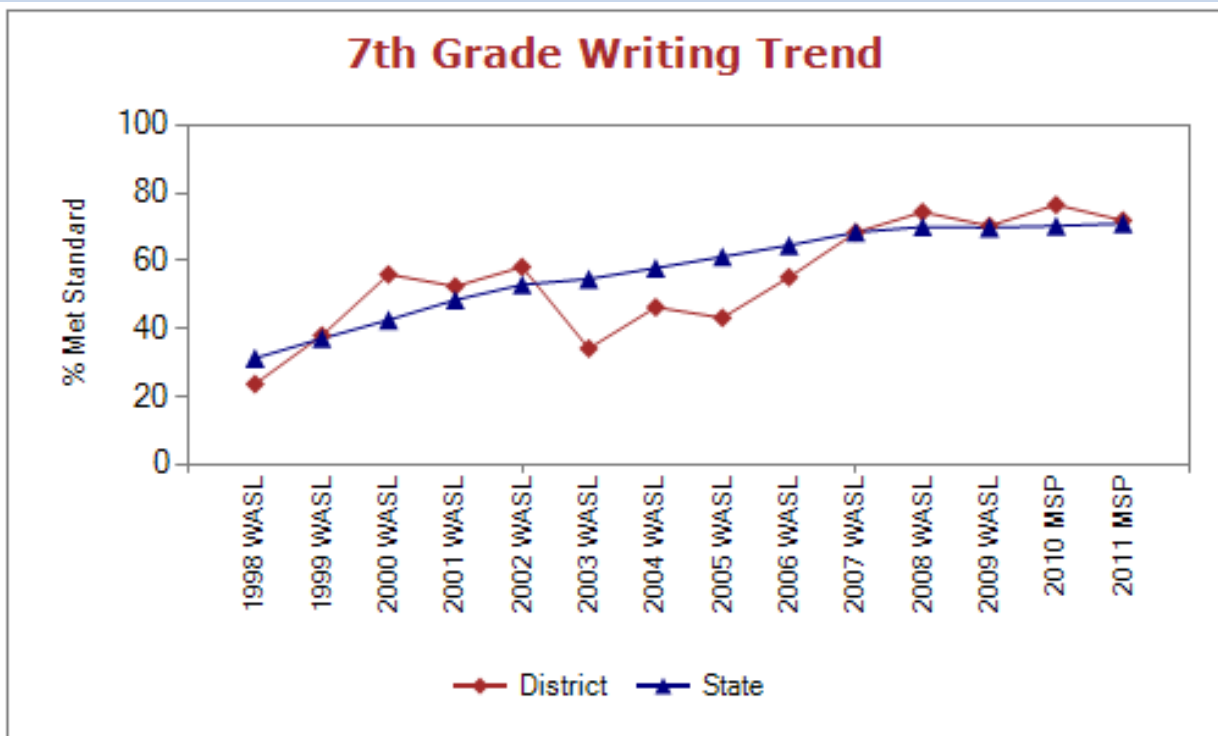
7th Grade Math

Year	District	State
1997-98 WASL	17.2%	20.1%
1998-99 WASL	27.5%	24.2%
1999-00 WASL	32.0%	28.2%
2000-01 WASL	27.5%	27.4%
2001-02 WASL	29.1%	30.4%
2002-03 WASL	34.2%	36.8%
2003-04 WASL	41.5%	46.3%
2004-05 WASL	44.4%	50.8%
2005-06 WASL	39.3%	48.5%
2006-07 WASL	36.8%	54.6%
2007-08 WASL	51.3%	50.5%
2008-09 WASL	50.0%	51.8%
2009-10 MSP	58.8%	55.3%
2010-11 MSP	59.4%	56.9%

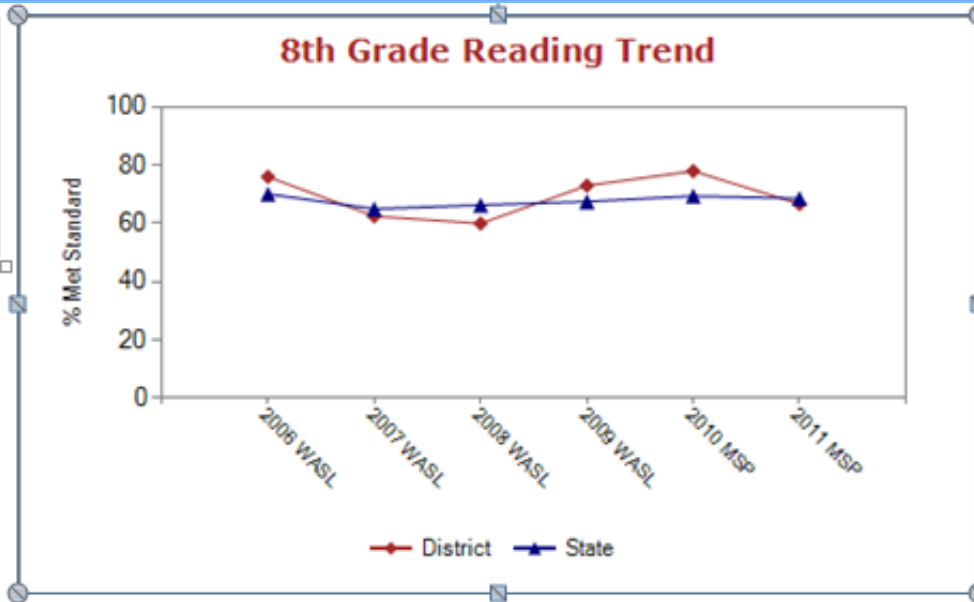
7th Grade Math Trend



Year	District	State
1997-98 WASL	23.7%	31.3%
1998-99 WASL	38.0%	37.1%
1999-00 WASL	56.0%	42.6%
2000-01 WASL	52.5%	48.5%
2001-02 WASL	58.2%	53.0%
2002-03 WASL	34.2%	54.7%
2003-04 WASL	46.3%	57.9%
2004-05 WASL	43.2%	61.2%
2005-06 WASL	55.2%	64.6%
2006-07 WASL	68.4%	68.4%
2007-08 WASL	74.4%	70.0%
2008-09 WASL	70.3%	69.8%
2009-10 MSP	76.5%	70.3%
2010-11 MSP	71.9%	71.0%

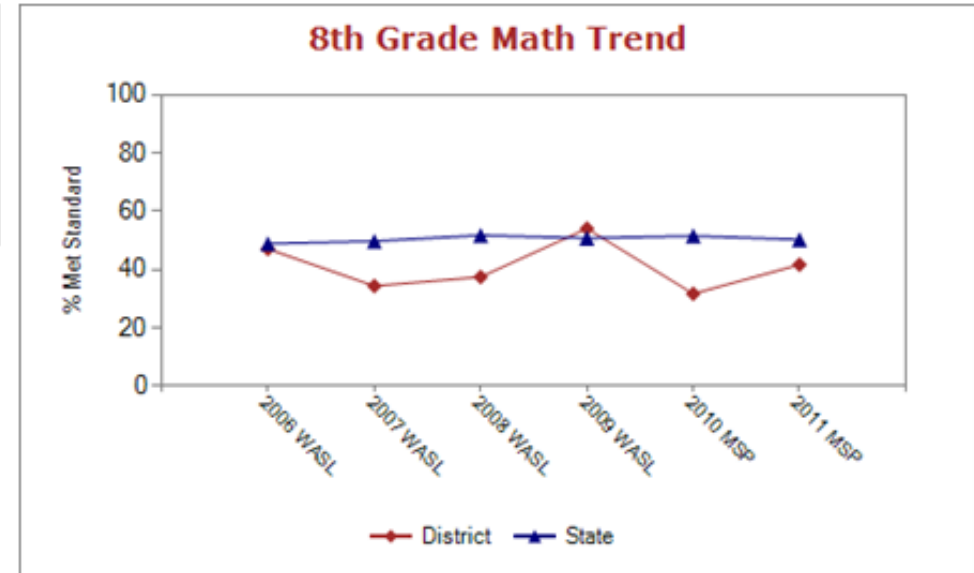


Year	District	State
2005-06 WASL	76.0%	70.1%
2006-07 WASL	62.5%	65.0%
2007-08 WASL	60.0%	66.3%
2008-09 WASL	73.0%	67.5%
2009-10 MSP	78.0%	69.4%
2010-11 MSP	66.7%	68.6%

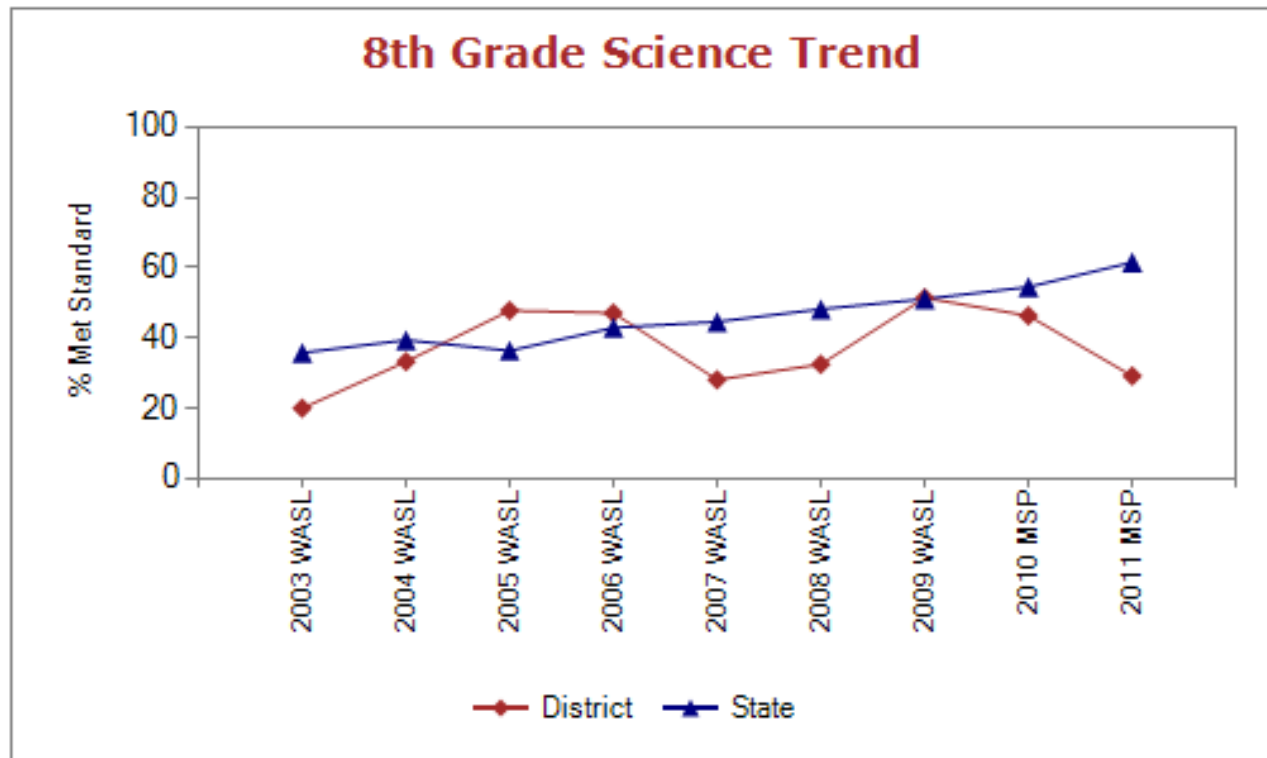


8th Grade Math

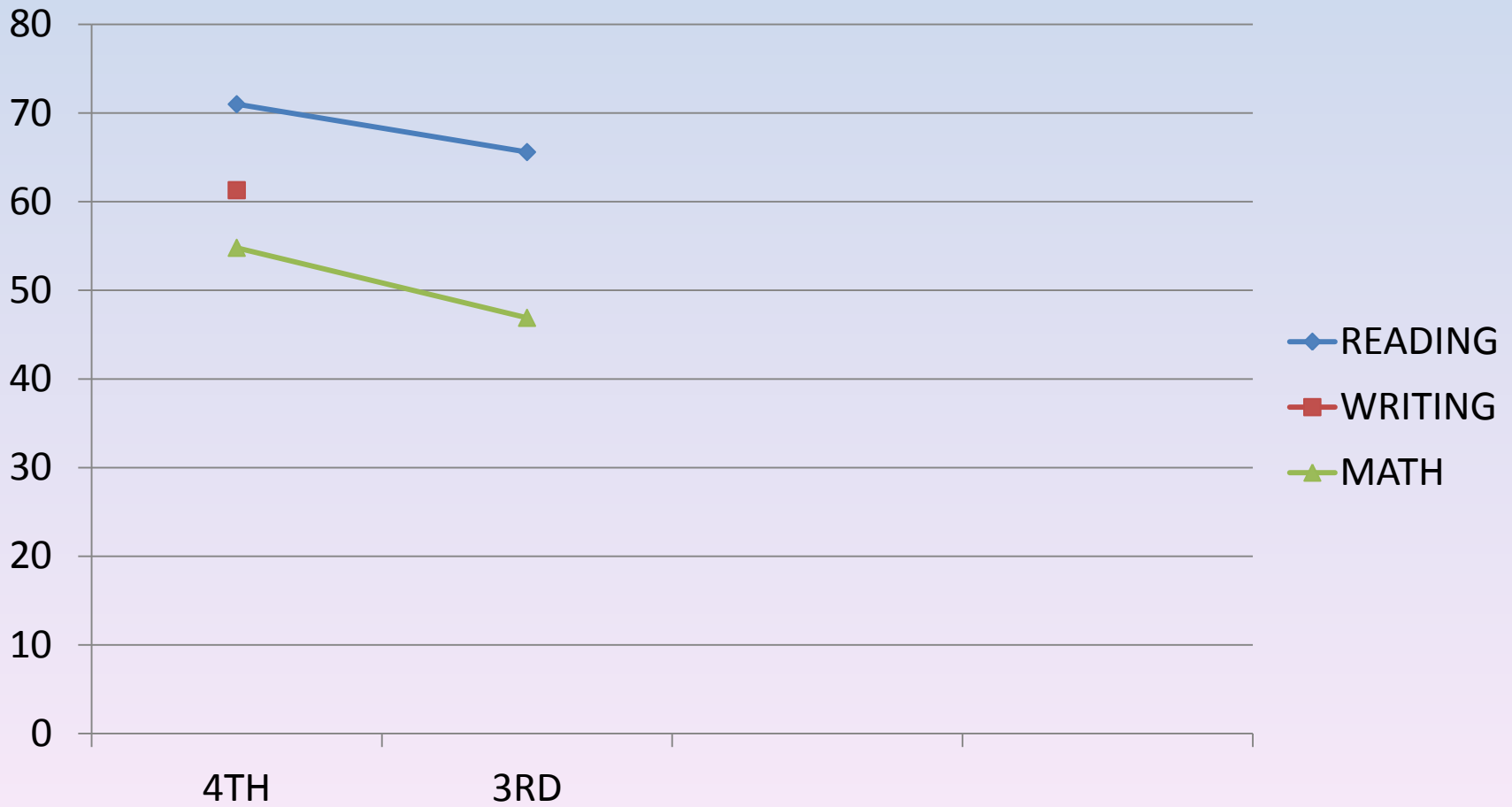
Year	District	State
2005-06 WASL	47.1%	48.9%
2006-07 WASL	34.4%	49.8%
2007-08 WASL	37.5%	51.8%
2008-09 WASL	54.1%	50.8%
2009-10 MSP	31.7%	51.6%
2010-11 MSP	41.7%	50.3%



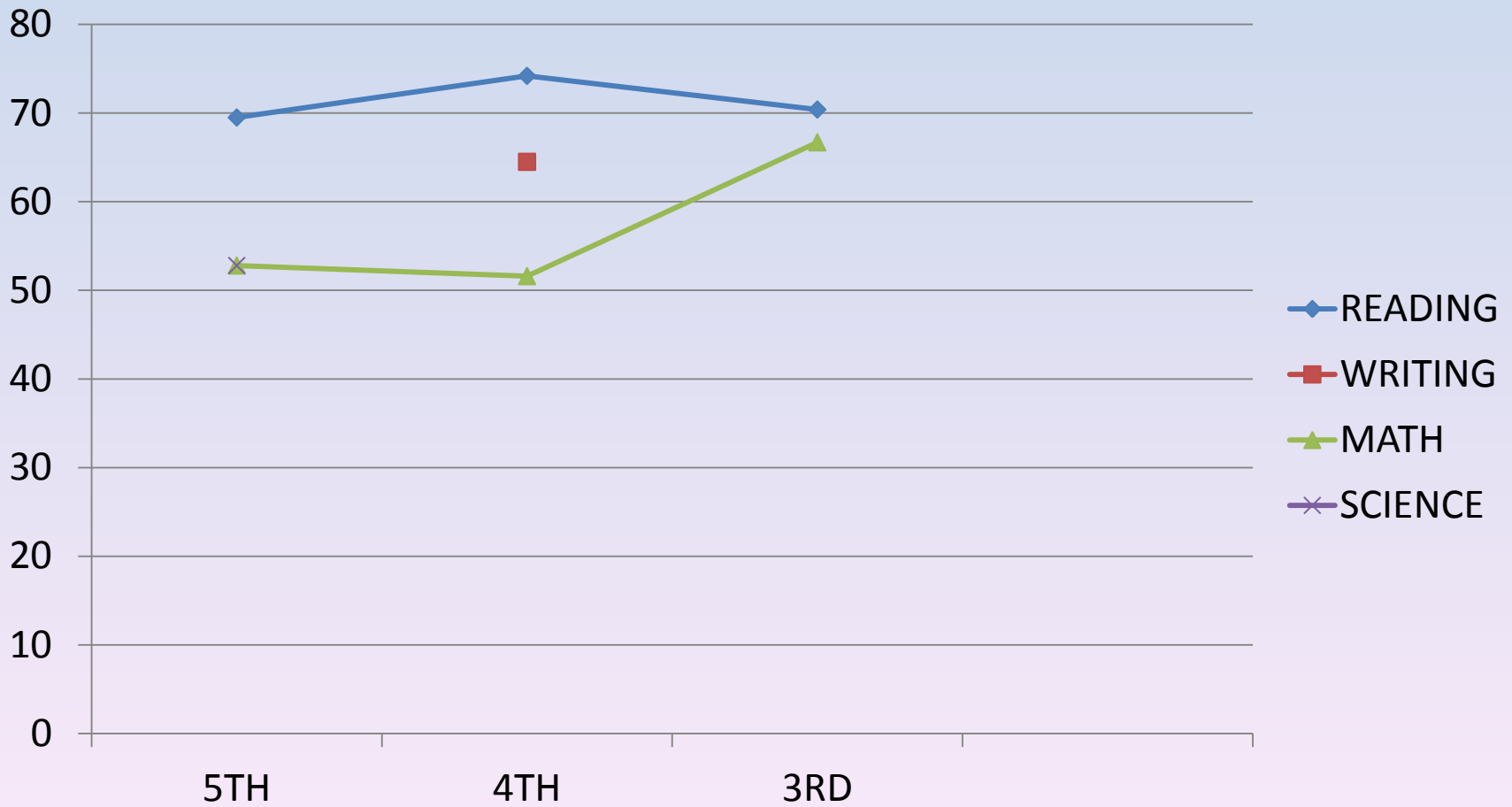
Year	District	State
<u>2002-03 WASL</u>	20.0%	35.8%
<u>2003-04 WASL</u>	33.3%	39.4%
<u>2004-05 WASL</u>	47.8%	36.4%
<u>2005-06 WASL</u>	47.1%	42.9%
<u>2006-07 WASL</u>	28.1%	44.6%
<u>2007-08 WASL</u>	32.5%	48.2%
<u>2008-09 WASL</u>	51.4%	51.1%
<u>2009-10 MSP</u>	46.3%	54.5%
<u>2010-11 MSP</u>	29.2%	61.5%



Current 5th grade class



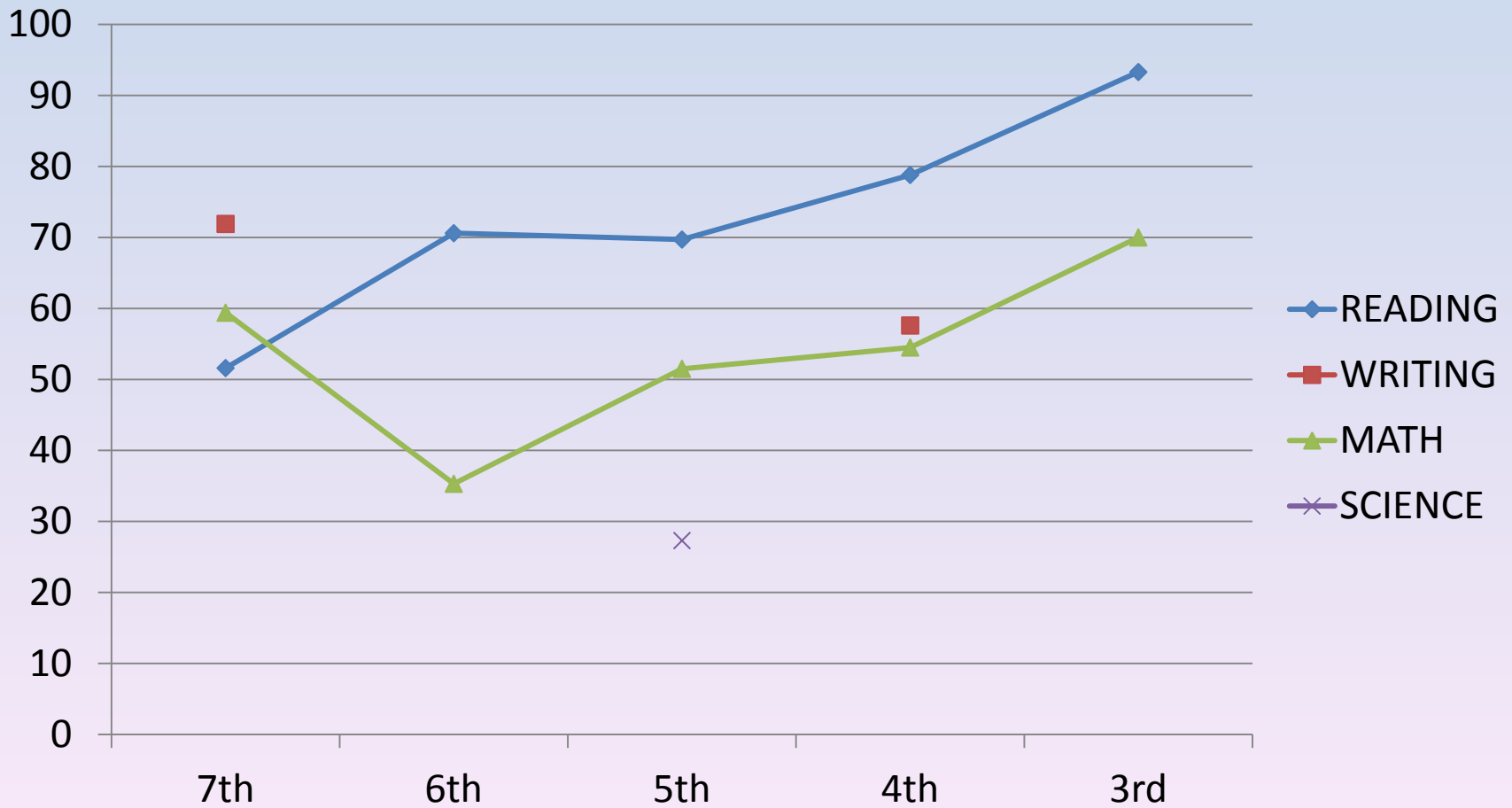
Current 6th grade class



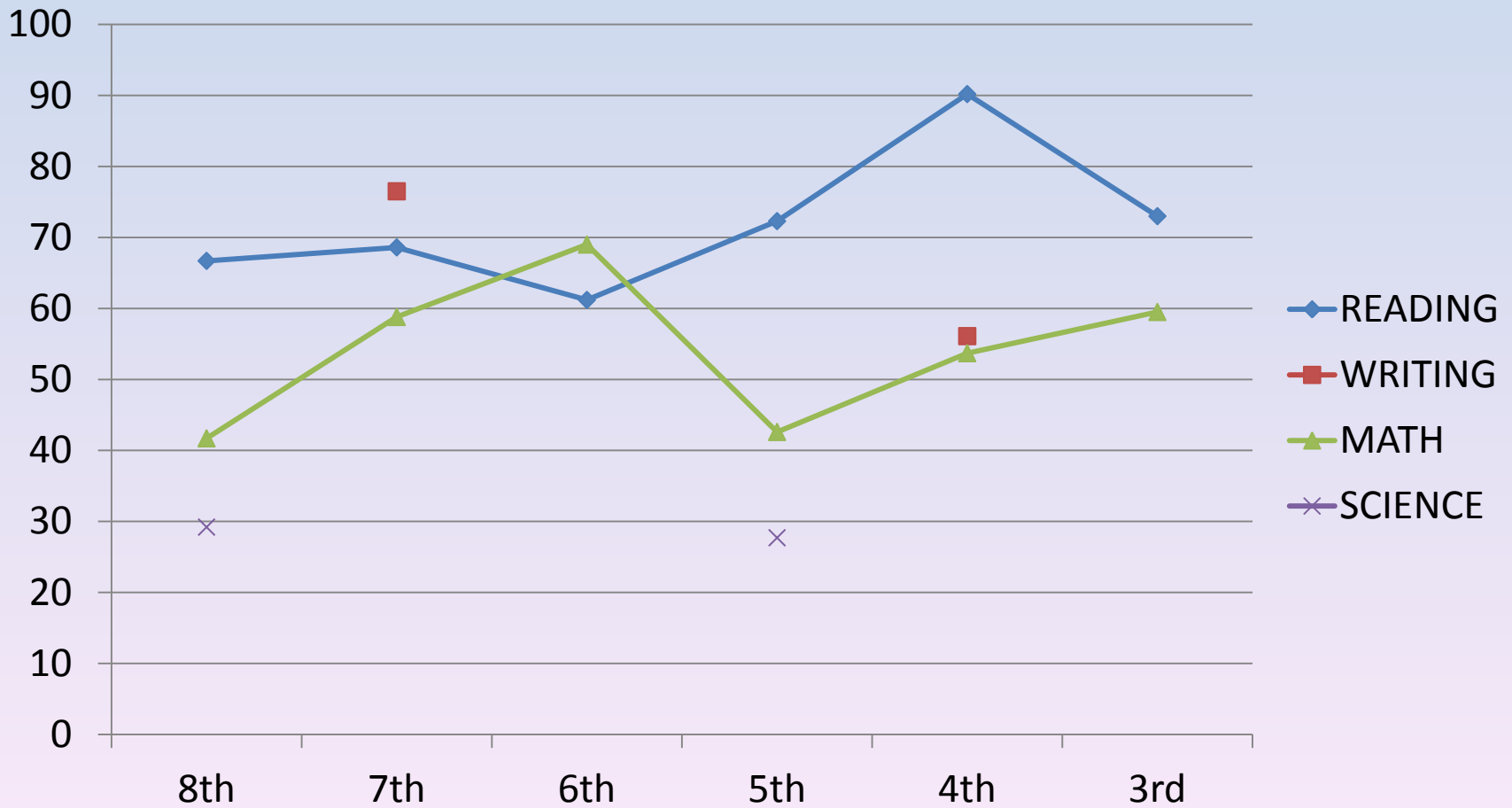
Current 7th grade class



Current 8th grade class



Current 9th grade class



State High School Testing

- High School Proficiency Exams (HSPE)
 - Spr 2010 Reading, Writing, Science, Math
 - Spr 2011 Reading, Writing, Science
 - Upcoming Spr 2012 Reading, Writing
- End-Of-Course Exams (EOC)
 - Spr 2011 Math (Alg 1, Geom)
 - Upcoming Spr 2012 Math (Alg1, Geom), Biology

Beginning Spring 2012 passing all five exams is required for graduation!

State High School Testing: WHS Spring 2011

HSPE/EOC grade 10 results:

– Reading, **87.5%** (2010, 83.8%)

– Writing, **92.9%** (2010, 87.2%)

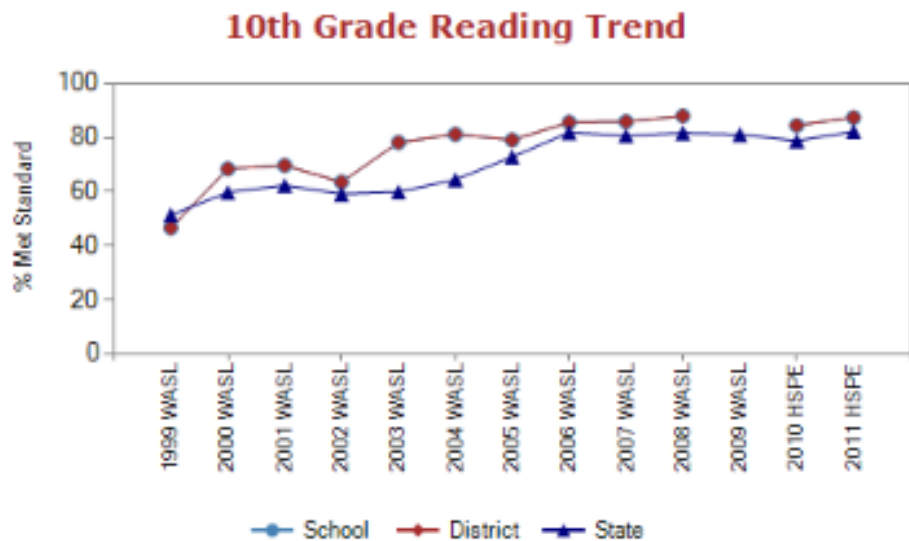
– Science, **50%** (2010, 30%)

– Math, **61.3%/91.7%** (2010, 27.5%)

Overall average + WAAS Portfolio = **64.7%**

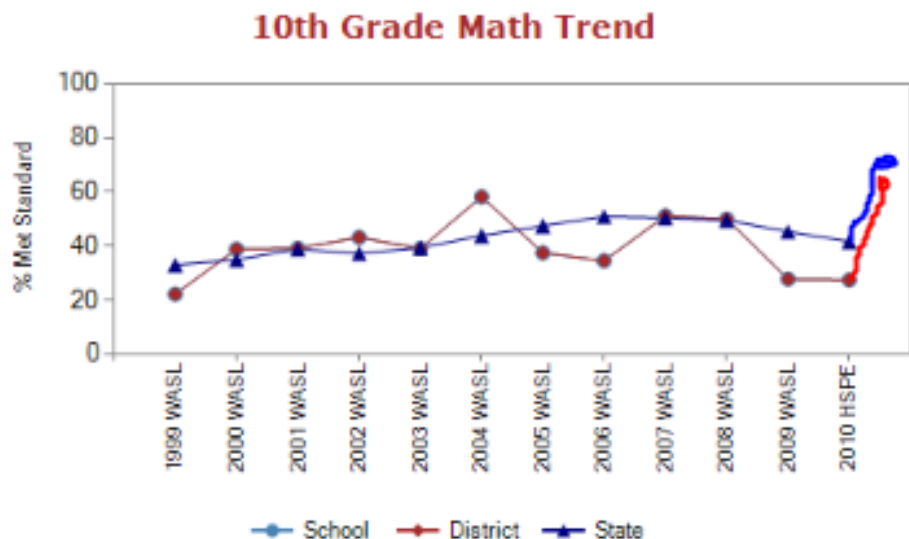
Overall state average = 68.5%

Year	School	District	State
1998-99 WASL	46.7%	46.7%	51.4%
1999-00 WASL	68.5%	68.5%	59.8%
2000-01 WASL	69.8%	69.8%	62.4%
2001-02 WASL	63.6%	63.6%	59.2%
2002-03 WASL	78.3%	78.3%	60.0%
2003-04 WASL	81.3%	81.3%	64.5%
2004-05 WASL	79.2%	79.2%	72.9%
2005-06 WASL	85.7%	85.7%	82.0%
2006-07 WASL	86.0%	86.0%	80.8%
2007-08 WASL	88.1%	88.1%	81.8%
2008-09 WASL			81.2%
2009-10 HSPE	84.6%	84.6%	78.9%
2010-11 HSPE	87.5%	87.5%	82.3%



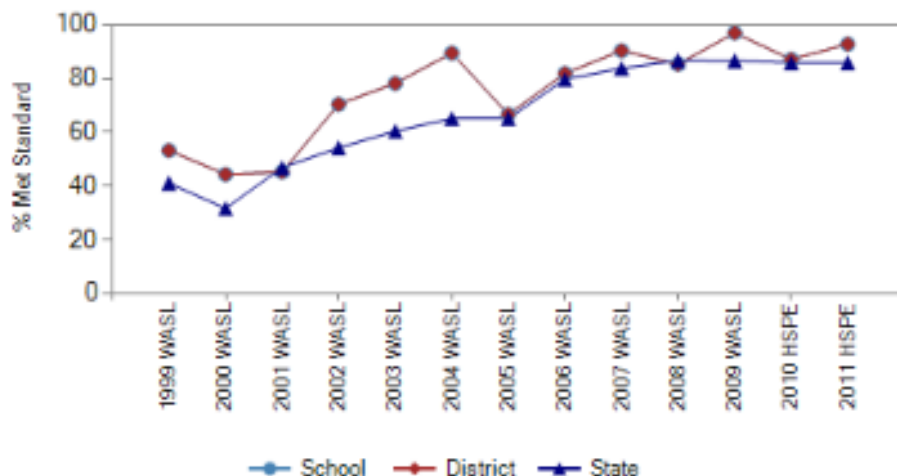
10th Grade Math

Year	School	District	State
1998-99 WASL	22.2%	22.2%	33.0%
1999-00 WASL	38.9%	38.9%	35.0%
2000-01 WASL	39.2%	39.2%	38.9%
2001-02 WASL	43.2%	43.2%	37.3%
2002-03 WASL	39.1%	39.1%	39.4%
2003-04 WASL	58.3%	58.3%	43.9%
2004-05 WASL	37.5%	37.5%	47.5%
2005-06 WASL	34.6%	34.6%	51.0%
2006-07 WASL	51.2%	51.2%	50.4%
2007-08 WASL	50.0%	50.0%	49.6%
2008-09 WASL	27.8%	27.8%	45.4%
2009-10 HSPE	27.5%	27.5%	41.7%



Year	School	District	State
1998-99 WASL	53.3%	53.3%	41.1%
1999-00 WASL	44.4%	44.4%	31.7%
2000-01 WASL	45.3%	45.3%	46.9%
2001-02 WASL	70.5%	70.5%	54.3%
2002-03 WASL	78.3%	78.3%	60.5%
2003-04 WASL	89.6%	89.6%	65.2%
2004-05 WASL	66.7%	66.7%	65.2%
2005-06 WASL	82.0%	82.0%	79.8%
2006-07 WASL	90.5%	90.5%	83.9%
2007-08 WASL	85.4%	85.4%	86.8%
2008-09 WASL	97.1%	97.1%	86.7%
2009-10 HSPE	87.2%	87.2%	86.0%
2010-11 HSPE	92.9%	92.9%	86.0%

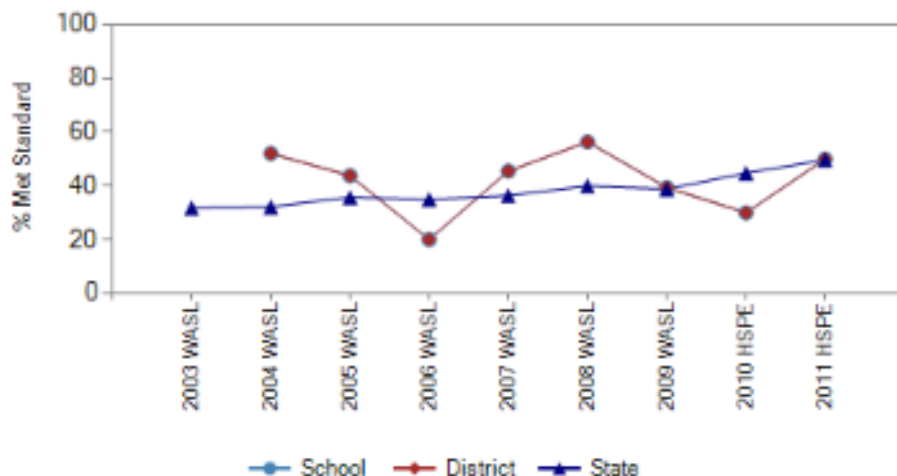
10th Grade Writing Trend



10th Grade Science

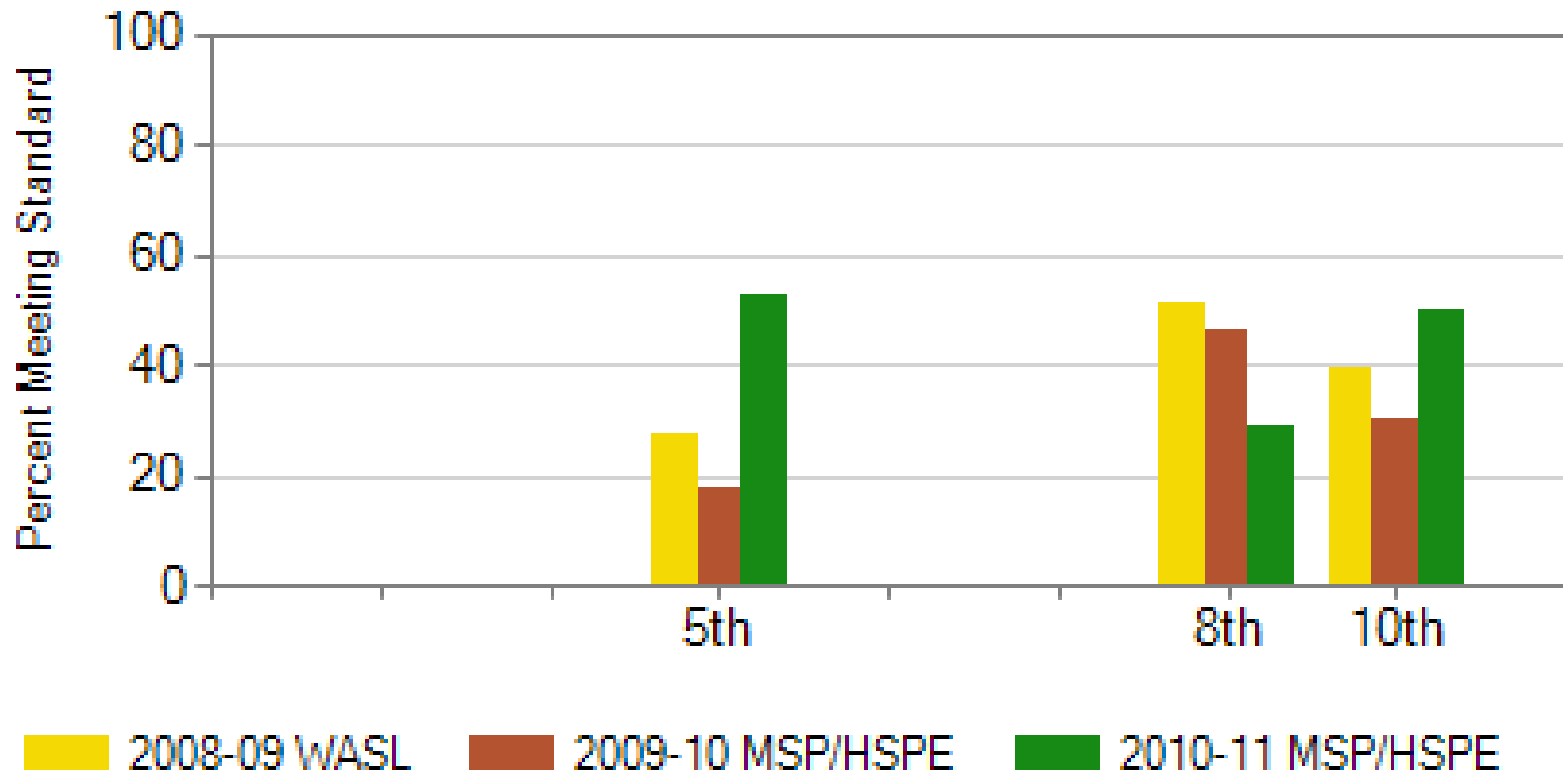
Year	School	District	State
2002-03 WASL			31.8%
2003-04 WASL	52.1%	52.1%	32.2%
2004-05 WASL	43.8%	43.8%	35.8%
2005-06 WASL	20.0%	20.0%	35.0%
2006-07 WASL	45.5%	45.5%	36.4%
2007-08 WASL	56.4%	56.4%	40.0%
2008-09 WASL	39.4%	39.4%	38.8%
2009-10 HSPE	30.0%	30.0%	44.8%
2010-11 HSPE	50.0%	50.0%	49.7%

10th Grade Science Trend



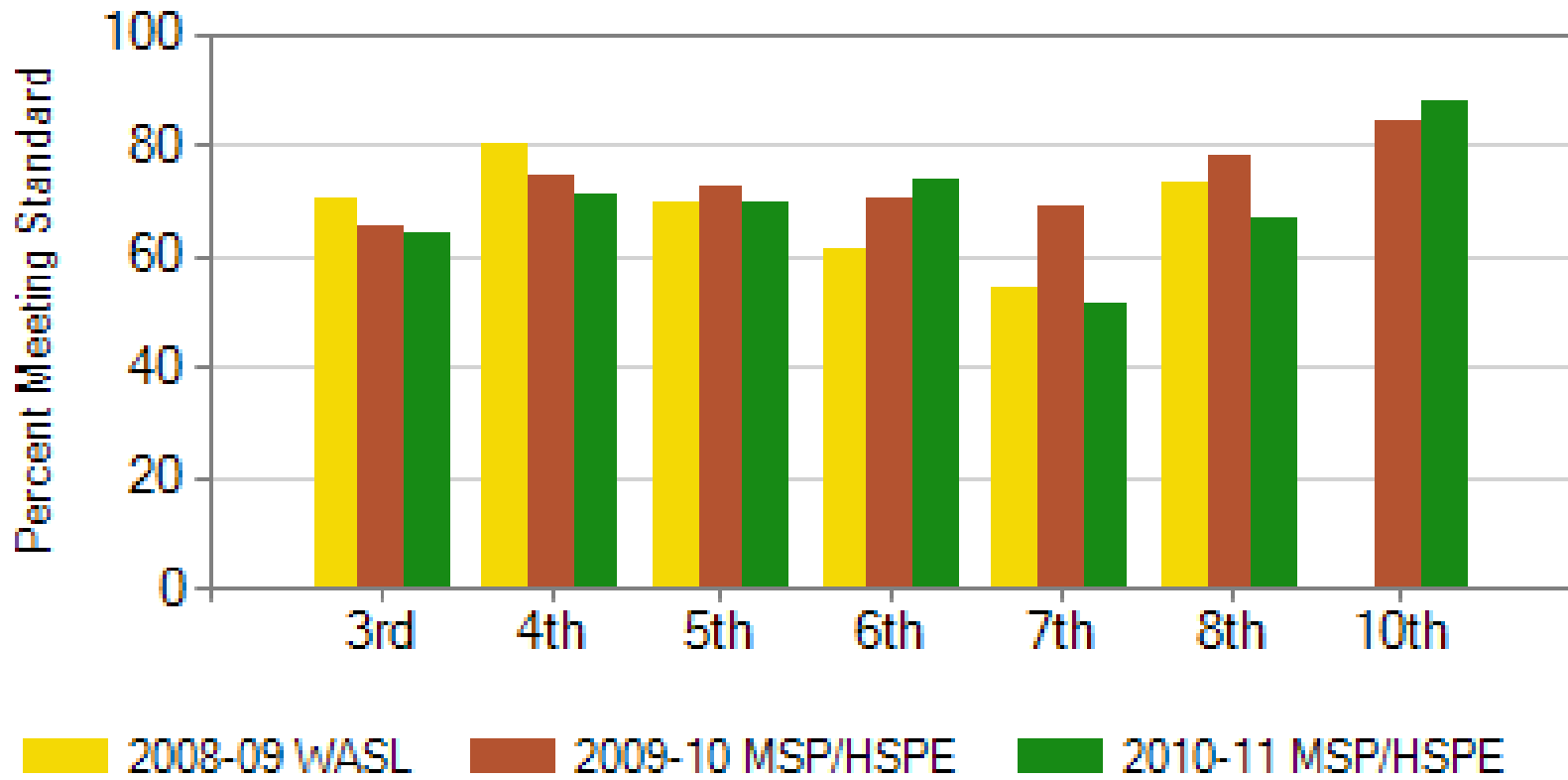
State High School Testing: WHS Spring 2011

Science



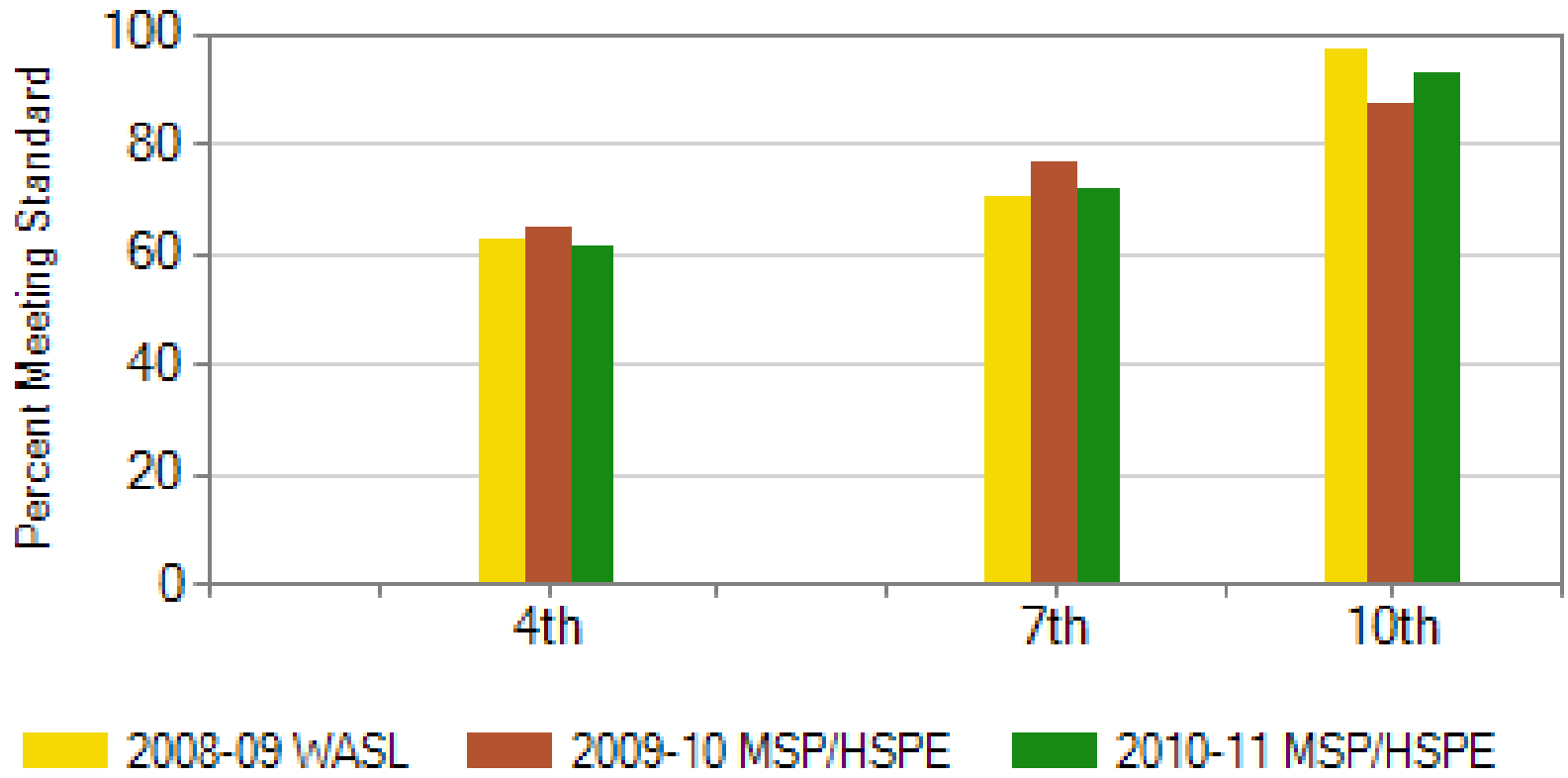
State High School Testing: WHS Spring 2011

Reading



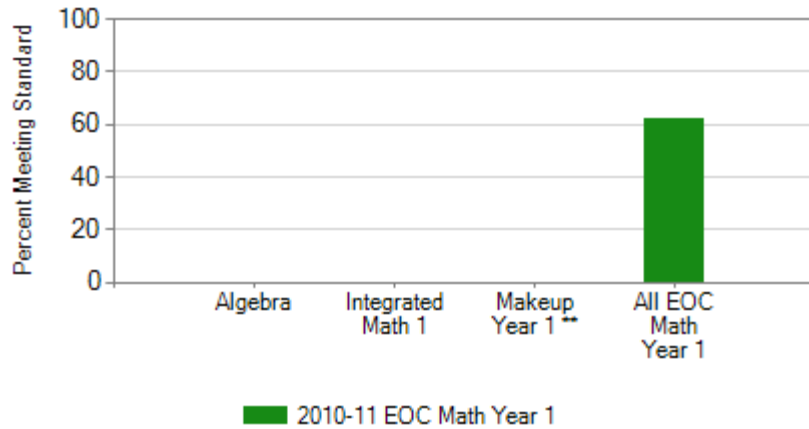
State High School Testing: WHS Spring 2011

Writing

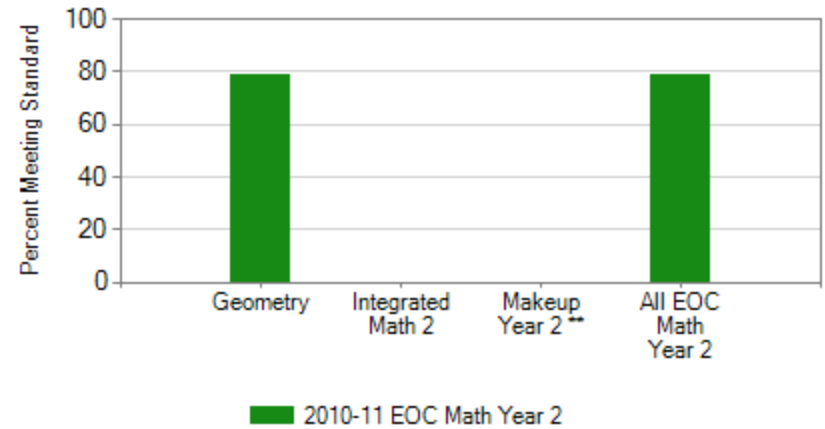


State High School Testing: WHS Spring 2011

EOC Math Year 1



EOC Math Year 2



Annual Yearly Progress (AYP)

“No Child Left Behind” Federal Measures

- Reading & Math only
- Must demonstrate continual growth in 36 cells as shown in the next slide
- Schools/districts who do not show growth as required are placed in improvement status, with five levels of accountability
- WSD has avoided being placed on the growing list! Nice work to all!

Annual Yearly Progress (AYP)

“No Child Left Behind” Federal Measures

Elementary School Band (Grades 3 - 5)	Met <u>Proficiency</u> Goal		Met <u>Participation</u> Goal						
Student Group	Reading	Math	Reading	Math					
All	Yes	Yes	Yes	Yes					
American Indian	N<Required	N<Required	N<Required	N<Required					
Asian/Pacific Islander	N/A	N/A	N/A	N/A					
Black	N<Required	N<Required	N<Required	N<Required					
Hispanic	N<Required	N<Required	N<Required	N<Required					
White	Yes	Yes	Yes	Yes					
Limited English	N<Required	N<Required	N<Required	N<Required					
Special Education	N<Required	N<Required	N<Required	N<Required					
Low Income	Yes	Yes	Yes	Yes					
Number of Yes:	13	Number of No:	0	% of Yes/Total:	100.0%	Number of N<Required:	20	Number of NA:	

Middle School Band (Grades 6 - 8)	Met <u>Proficiency</u> Goal		Met <u>Participation</u> Goal						
Student Group	Reading	Math	Reading	Math					
All	Yes	Yes	Yes	Yes					
American Indian	N<Required	N<Required	N<Required	N<Required					
Asian/Pacific Islander	N<Required	N<Required	N<Required	N<Required					
Black	N<Required	N<Required	N<Required	N<Required					
Hispanic	N<Required	N<Required	N<Required	N<Required					
White	Yes	Yes	Yes	Yes					
Limited English	N<Required	N<Required	N<Required	N<Required					
Special Education	N<Required	N<Required	N<Required	N<Required					
Low Income	Yes	Yes	Yes	Yes					
Number of Yes:	13	Number of No:	0	% of Yes/Total:	100.0%	Number of N<Required:	24	Number of NA:	

Annual Yearly Progress (AYP)

“No Child Left Behind” Federal Measures

High School Band (Grade 10)	Met <u>Proficiency</u> Goal		Met <u>Participation</u> Goal						
	Reading	Math	Reading	Math					
All	Yes	N<Required	Yes	Yes					
American Indian	N/A	N/A	N/A	N/A					
Asian/Pacific Islander	N/A	N/A	N/A	N/A					
Black	N<Required	N<Required	N<Required	N<Required					
Hispanic	N<Required	N<Required	N<Required	N<Required					
White	N<Required	N<Required	N<Required	N<Required					
Limited English	N<Required	N<Required	N<Required	N<Required					
Special Education	N<Required	N<Required	N<Required	N<Required					
Low Income	N<Required	N<Required	N<Required	N<Required					
Number of Yes:	4	Number of No:	0	% of Yes/Total:	100.0%	Number of N<Required:	25	Number of NA:	

Annual Yearly Progress (AYP)

“No Child Left Behind” Federal Measures

- **Adequate Yearly Progress (AYP)**

In 2011, preliminary figures show that 1,388 schools did not make Adequate Yearly Progress (AYP), an increase of a little more than 200 schools from 2010. Of that total, 1,181 are in one of five steps of improvement. **For districts, 223 (out of 295 total) did not make AYP and 113 are in one of two steps of improvement.**